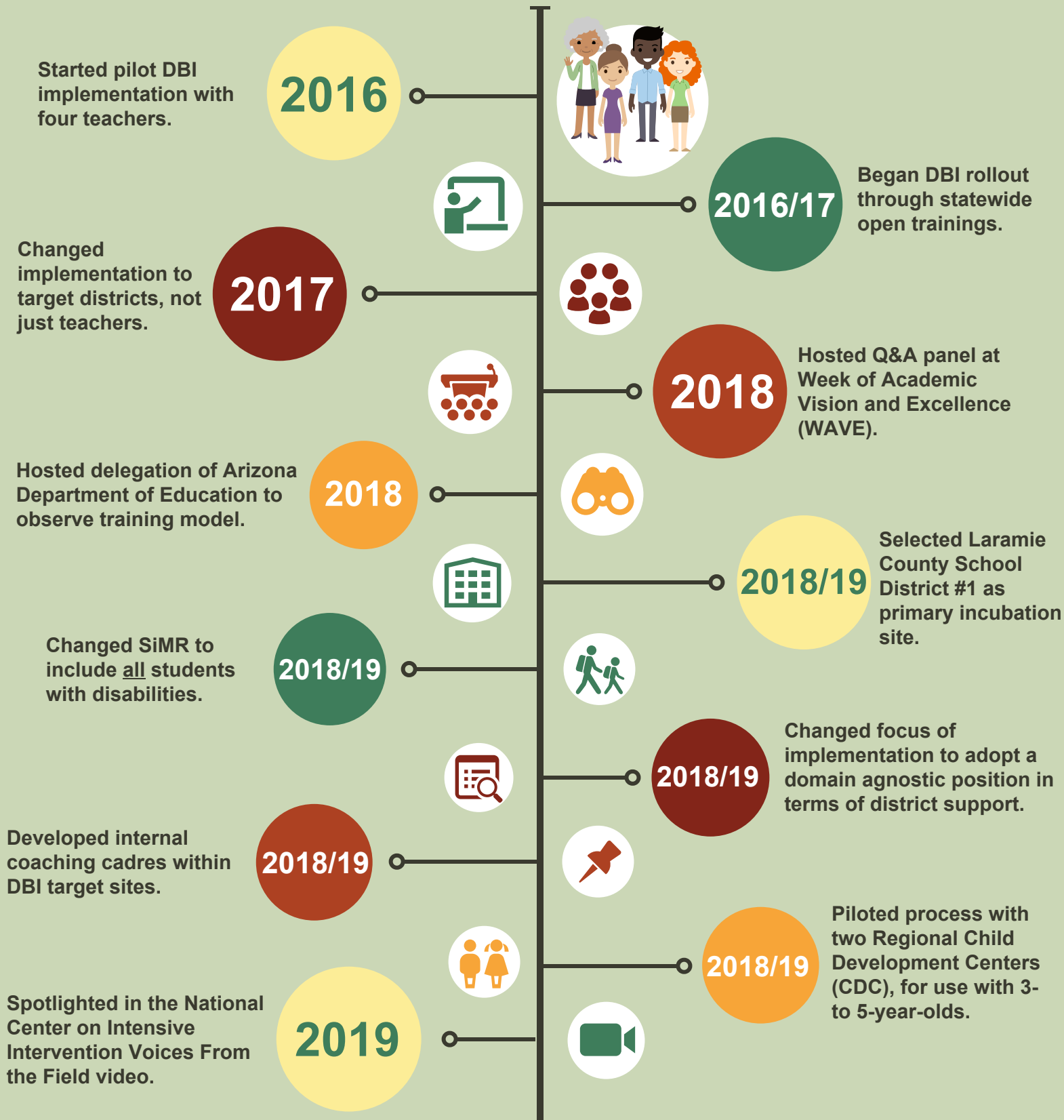


# The Evolution of Data-Based Individualization in Wyoming

*The following illustrates how a pilot project with four special education classroom teachers led to a national presentation on the impact of Data-Based Individualization (DBI) for Wyoming students.*



Presented at Council of Administrators of Special Educators/ National Association of State Directors of Special Education and at Summer Technical Assistance Retreat.

2019/20



2019/20

Began training general education teachers/ administrators in DBI for use in building intervention team process.



Developed and fielded six DBI modules for state learning management system.

2020



2020

Justine Essex presented *Strategies for Setting High-Quality Academic Individualized Education Program Goals* for the PROGRESS Center.



Aligned DBI work with Department's state-wide MTSS rollout.

2020/21



2020

Discussion with Region 9 Comprehensive Center Network (Illinois State Board of Education).



Keri Jenkins (District DBI Coach) presented on the *Path to PROGRESS: How to Move Beyond Compliance for Students with Disabilities*.

2021



2021

Presented to Texas Department of Education Administrator's Community of Practice.



Presented on the U.S. Department of Education *Lessons from the Field, Returning to In-Person Learning: Supporting Students, Especially Those with Disabilities, Through Intensive Instruction, Effective Learning Environments and Family Engagement*.

2021



2021

Launched statewide DBI community of practice with 70 educators.



Began training all staff at Hanna Elementary/Carbon County School District #2.

2021



2021

Began training 1st cohort of teachers from Natrona County School District.



2021

Wyoming Department of Education incorporated DBI as a focus area in the State Strategic Plan.